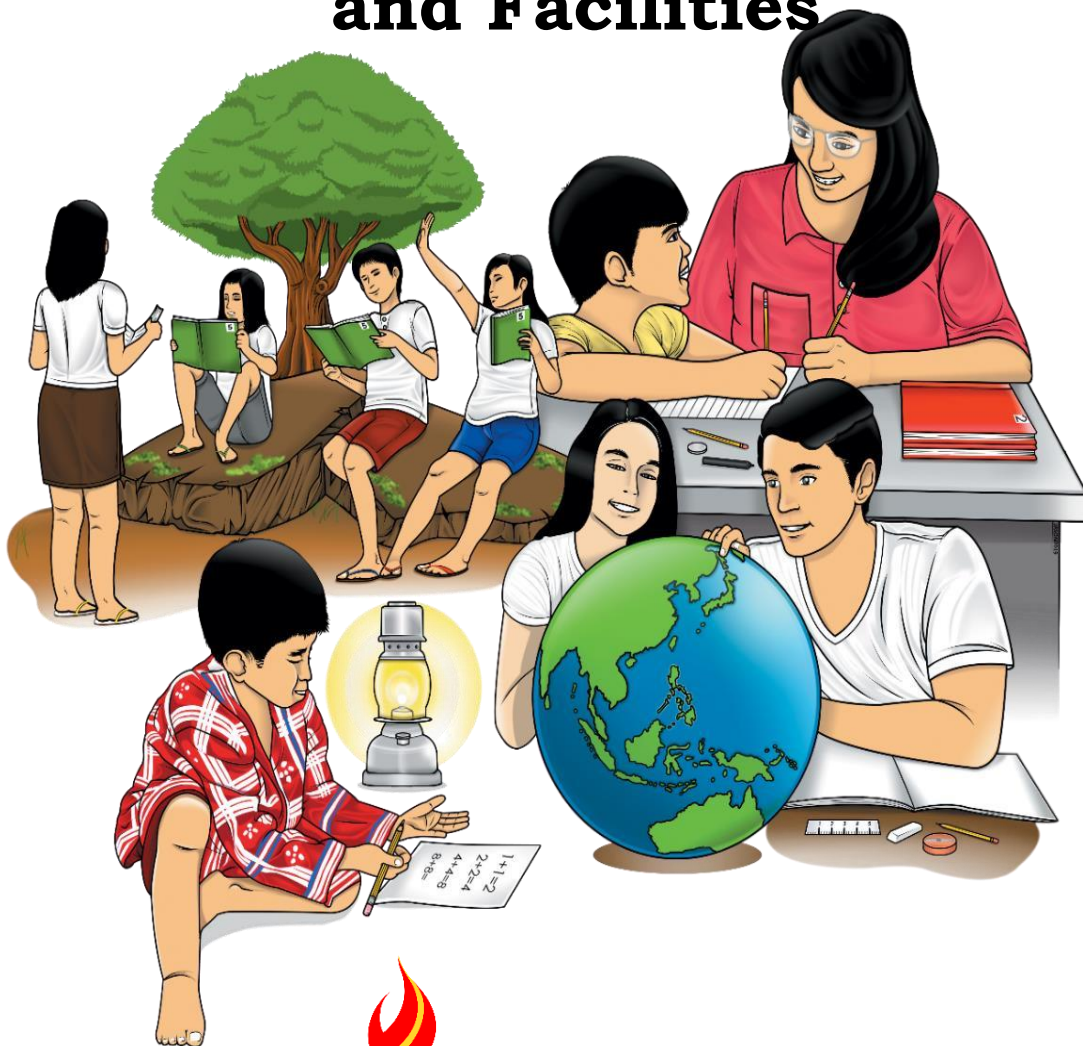


# Health

## Quarter 1 – Module 5

### Community Health Resources and Facilities



**Health – Grade 6**  
**Alternative Delivery Mode**  
**Quarter 1 – Module 5: Community Health Resources and Facilities**  
**First Edition, 2020**

**Republic Act 8293, section 176** states that: No copyright shall subsist in any work of the Government of the Philippines. However, prior approval of the government agency or office wherein the work is created shall be necessary for exploitation of such work for profit. Such agency or office may, among other things, impose as a condition the payment of royalties.

Borrowed materials (i.e., songs, stories, poems, pictures, photos, brand names, trademarks, etc.) included in this module are owned by their respective copyright holders. Every effort has been exerted to locate and seek permission to use these materials from their respective copyright owners. The publisher and authors do not represent nor claim ownership over them.

Published by the Department of Education  
Secretary: Leonor Magtolis Briones  
Undersecretary: Diosdado M. San Antonio

**Development Team of the Module**

**Authors:** Francilet R. Padios, Receli P. Imas, Mary Lutz P. Panizales

**Editors:** Elsie P. Serafico

**Reviewers:** Ma. Lennie F. Pamposa, Elsie P. Serafico, John Mark Q. Apellado

**Illustrators:** Zoila Mae M. Panes, Riza E. Celebrado, Marvin P. Pagurayan

**Layout Artist:** Catherine P. Padrones, Mary Grace N. Prologo

**Management Team:** Ma. Gemma M. Ledesma

Josilyn S. Solana

Elena P. Gonzaga

Donald T. Genine

Athea V. Landar

Ma. Nilma E. Casamayor

Dexter P. Diergos

Engr. Winifred S. Panes

**Printed in the Philippines by \_\_\_\_\_**

**Department of Education – Region VI-Western Visayas**

Office Address: Duran Street, Iloilo City, Philippines, 5000

Telefax: (033) 336-2816, (033) 509-7653

E-mail Address: [deped6@deped.gov.ph](mailto:deped6@deped.gov.ph)

**6**

# **Health**

## **Quarter 1 – Module 5 Community Health Resources and Facilities**

## **Introductory Message**

This Self-Learning Module (SLM) is prepared so that you, our dear learners, can continue your studies and learn while at home. Activities, questions, directions, exercises, and discussions are carefully stated for you to understand each lesson.

Each SLM is composed of different parts. Each part shall guide you step-by-step as you discover and understand the lesson prepared for you.

Pre-tests are provided to measure your prior knowledge on lessons in each SLM. This will tell you if you need to proceed on completing this module or if you need to ask your facilitator or your teacher's assistance for better understanding of the lesson. At the end of each module, you need to answer the post-test to self-check your learning. Answer keys are provided for each activity and test. We trust that you will be honest in using these.

In addition to the material in the main text, Notes to the Teacher are also provided to our facilitators and parents for strategies and reminders on how they can best help you on your home-based learning.

Please use this module with care. Do not put unnecessary marks on any part of this SLM. Use a separate sheet of paper in answering the exercises and tests. And read the instructions carefully before performing each task.

If you have any questions in using this SLM or any difficulty in answering the tasks in this module, do not hesitate to consult your teacher or facilitator.

Thank you.



## ***What I Need to Know***

This module was designed and written with you in mind. It is here to help you identify the different health resources and facilities in the community. The module consists of only one lesson.

### Lesson 1 – Different Health Resources and Facilities in the Community and Their Importance

After going through this module, you are expected to:

- identify the community health resources and facilities that may be utilized to address a variety of personal health issues and concerns **(MELC, H6PH-Igh-23)** and
- discuss the importance of community health resources and facilities.



## What I Know

Directions: Read the statements below. Tell the community health resources or facilities being referred to. Choose the letter of the correct answer from the given words inside the box. Write the answer in your notebook.

1. It is a facility that offers dental or oral care.
2. This is a specialist for muscular disorders who give hands-on care and prescribed exercises to persons with injuries, disabilities and other health conditions.
3. Services like treatment, consultation, vaccination and surgery are being offered in this facility.
4. This facility provides medical care to children, teachers and other school personnel.
5. This person is a specialist in heart problems and diseases.
6. This is a community health resource that assists doctors in giving health care to patients.
7. This specialist offers eye care to persons with eye problems.
8. Over-the-counter and Prescription medicines that help in the wellness of people are being sold in this community facility.
9. It is a facility that offers health services to people living in barangays or barrios.
10. This is a community health resources that performs operations and surgical related cases.

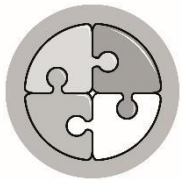
A. Cardiologist  
B. Nurse  
C. Drugstore  
D. Dental Clinic  
E. Physical Therapist  
F. Hospital  
G. Surgeon  
H. School clinic  
I. Ophthalmologist  
J. Barangay Health Center



# Lesson 1

## Different Health Resources and Facilities in the Community and their Importance

Community health resources and facilities play a very important role in offering health services to people. We need to know the available health resources and facilities in the community to be utilized in addressing a variety of personal health issues and concerns.



### *What's In*

Community health resources include our nurses, doctors, dentists, midwives and other health workers that offer health care or services. They perform their roles or responsibilities in different facilities. Facilities like clinics, health centers and hospitals offer amenities or services to address or help people with their personal health problems. They are treated, given appropriate medications, and thorough attention on their health needs. Different resources and facilities in the community can help save and preserve people's lives.



## What's New

Directions: The community human resources are here today to tell you the roles or responsibilities that they perform each day. They will let you know their importance as health care providers. Read the comic strip and take note of what they are saying.

I am a **dentist**. I give dental care by checking the over-all status of the teeth and gums in the mouth. I do tooth extraction, cleaning, surgery and alignment like putting braces or retainers.



I am a **doctor**. I do physical and medical examination to diagnose or know your diseases or ailments. I give advice on your health needs.



I am a **nurse**. I assist the doctor in giving health care. I check your vital signs like blood pressure and pulse rate. I give medicines to be taken in and shots or injections to make you well.



I am a **pediatrician**. I am a specialist in children's health and diseases. I give vaccines to boost their immune system. I monitor their growth and I also prescribe medicines if they are ill or not feeling well.



Illustrated by Zoila Mae M. Panes, Riza E. Celebrado, and Marvin P. Pagurayan



I am a **midwife**. I offer health services to women during pregnancy and childbirth. I see to it that the mother and child are in healthy condition through check-ups and medicine prescriptions.



I am an **ophthalmologist** or eye doctor. I treat persons with poor eye conditions and diseases. I perform eye surgery. Eye corrections like eyeglasses and contact lenses are available in my clinic.



I am a **dermatologist** who specializes on skin problems and diseases. I offer services like facial treatment and surgery. I prescribe creams and medicines to answer your skin needs.

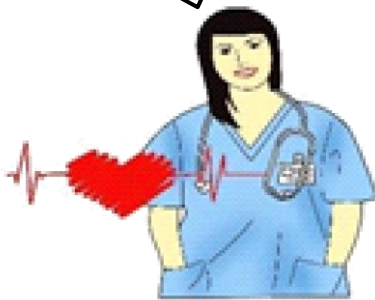


I am a **physical therapist**, a specialist in muscular disorders. I give hands-on care and prescribed exercises to persons with injuries, disabilities and other health conditions that need treatment.

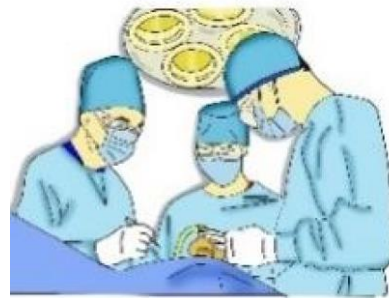


Illustrated by Zoila Mae M. Panes, Riza E. Celebrado, and Marvin P. Pagurayan

I am a **cardiologist**, a specialist in heart diseases. I perform heart surgeries or operations. I also give advice on how you are going to take care of your heart.



We are the **surgeons**. We perform operations and other surgical related cases.



Community human resources are health care specialists and providers who give health services to people. They are very important because they do check-ups and give advice or counselling to make the patients aware of their health status. Treatments and medications are also offered for the people in the community to achieve a healthy condition.



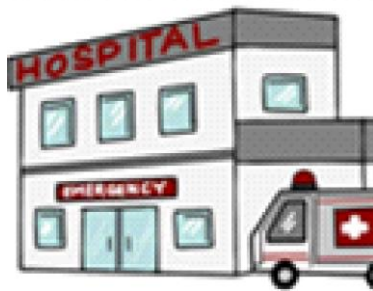
Illustrated by Zoila Mae M. Panes, Riza E. Celebrado, and Marvin P. Pagurayan



## What is It

- A. Directions: Here are the community resources and facilities that provide amenities and services to address the personal health issues and concerns of people. Let's learn the importance of each one.

### Hospital



This is a facility for consultation, treatment, surgery and hospitalization needs of patients. Different doctors or specialists are working here to serve your health needs.

### Nutrition Health Center



It is a facility that roll-outs programs like advocacy on good nutrition, feeding program and giving of free vitamins and minerals for good nutrition. Nutritionists and other health workers offer services here.

### First Aid Station



It is a station that gives emergency care or treatment before medical aid can be given. First aid supplies are kept here. Health volunteers, first aid helpers and providers are here to respond to your needs.

### Drugstore/Pharmacy



Medicines are sold in this store or facility. Pharmacists work here to sell medicines and help patients on the use of prescribed and over-the-counter drugs.

### Dental Clinic



Oral or dental care is being offered in this facility. Dentists are working here to treat gums and teeth problems.

### Maternity Clinic/Birthing Center



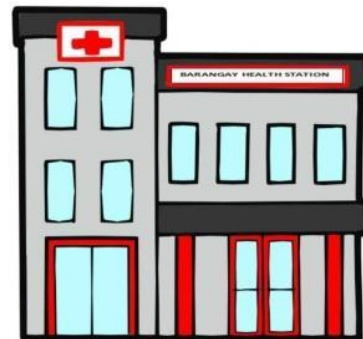
This facility provides care to women's health during pregnancy, childbirth and postpartum (after birth). Midwives and other health care workers offer services to make sure that the mother and her baby is in good condition.

### Laboratory Clinic



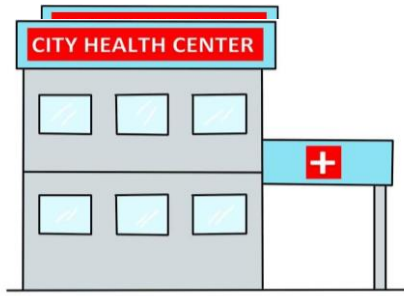
Laboratory tests in blood, urine, stool and saliva as well as x-ray and ultrasound are offered here. Medical technologists, other health care professionals and technicians work here.

### Barangay Health Center/Station



Health assessment for the people in barangays or rural areas are being offered in this facility. Barangay health workers (BHW) and health volunteers work in this facility.

### City Health Center



This facility offers health care to people who are living in the city or urban area. Doctors, nurses, pharmacists, midwives and medical technologists work here.

### School clinic



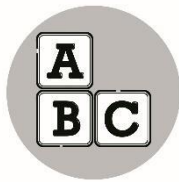
This facility offers health care needs to children, teachers and other personnel in school. Nurses and dentists are working here to give health care.

Illustrated by Zoila Mae M. Panes, Riza E. Celebrado, and Marvin P. Pagurayan



Remember:

Community health resources and facilities offer needed health services to people. These are available to address personal health issues and concerns.



## ***What's More***

Directions: Read each situation carefully. Write the letter of the answer that shows the importance of community resources and facilities in addressing a variety of personal health issues and concerns. Write the answer in your notebook.

1. The pupils are playing in the playground. Somebody got injured. What should they do? Why?
  - A. Bring the injured pupil to the school clinic for first aid or medical attention.
  - B. Go to the drugstore and buy medicine for the injured pupil.
  - C. Leave the injured pupil and return to the classroom.
  
2. Liza has difficulty in urinating. Her parents decided to bring her to a laboratory clinic. Why?
  - A. For urine test
  - B. For nutrition counseling
  - C. For deworming
  
3. What is the importance of a barangay health center or station to the people in the community?
  - A. For giving relief goods during typhoons
  - B. For entertainment news
  - C. For free health services like check-up and vaccination
  
4. The kids noticed a First Aid Station in the street. What is the importance of this health facility?
  - A. For free medicines
  - B. For emergency care or treatment
  - C. For free training to those who want to be doctors
  
5. Dindo has developed rashes due to a very high fever. He is experiencing headache and has been vomiting for days. They brought Dindo to the hospital. Why?
  - A. For dental assessment
  - B. For advice of proper nutrition
  - C. For immediate treatment



## ***What I Have Learned***

Directions: Complete the sentences with the correct word or words from the box below. Write the answer in your notebook.

1. We buy over-the-counter and prescription drugs or medicine for our wellness or treatment of diseases in the \_\_\_\_\_.
2. There are designated areas for the \_\_\_\_\_ to give emergency care or treatment to people before medical aid can be given.
3. Pregnancy, childbirth and after birth of women are taken care of by the \_\_\_\_\_ in the community.
4. People who have illnesses or diseases are being brought to the \_\_\_\_\_ for consultation or treatment.
5. Eye problems or diseases are being evaluated or treated by an \_\_\_\_\_.
6. The specialist in heart diseases is called a \_\_\_\_\_.
7. The \_\_\_\_\_ performs surgical operations to patients.
8. The specialist in muscular disorder is called a \_\_\_\_\_.
9. Pediatrician is a specialist in the health and diseases of \_\_\_\_\_.
10. A community health resource that specializes on skin problems and diseases is called a \_\_\_\_\_.

first aid stations	pharmacy	hospital
cardiologist	ophthalmologist	midwife
physical therapist	surgeon	children
dermatologist		





## What I Can Do

Directions: Complete the dialogue about the importance of community health resources and facilities by filling the blank with the correct word or group of words that can be found inside the box. Write the answers in your notebook.

Loy: Let us have a dialogue about the importance of community health resources and facilities. Let us start with the importance of barangay health center.

Susan: Barangay Health Center offers (1.) \_\_\_\_\_ assessment to the people in barangay or rural areas.

Mary: Maternity clinic or (2.) \_\_\_\_\_ is a facility for women who are pregnant or who are about to give birth.

Loy: Laboratory tests like blood test, urine test and stool examination are offered by (3.) \_\_\_\_\_ for the people to know the status of their health.

Susan: Children and teachers also avail services in school as they use the (4.) \_\_\_\_\_ as a health facility.

Mary: The community health resource who does physical and medical examination to diagnose patient's diseases is a (5.) \_\_\_\_\_.

Loy: It is the work of (6.) \_\_\_\_\_ to help people with muscular disorder.

Susan: Yes. You are right Loy! The cardiologist is a specialist that treats (7.) \_\_\_\_\_ diseases.

Mary: The ophthalmologist is also called an (8.) \_\_\_\_\_ who specializes in diseases or eye problems.

Loy: Services like consultation, vaccination and surgery are being offered in the (9.) \_\_\_\_\_ with the doctors and nurses on duty.

Susan: Free services like check-up and vaccination in barangay or rural areas are offered in (10.) \_\_\_\_\_.

doctor	birthing center	health	laboratory clinic
hospital	physical therapist	school clinic	heart
surgeon	eye doctor	barangay health center	





## **Assessment**

Directions: Write **True** if the statement is correct and **False** if it is not. Write the answer in your notebook.

1. Pharmacy is a community facility where medicines are being sold for people's wellness or medication.
2. Surgeon is a specialist in skin problems or diseases.
3. School clinic is a facility in the school that gives health care services to pupils, teachers and other personnel in school.
4. Dentist is a specialist that treats gums and teeth problems.
5. Laboratory tests in blood, urine, stool, saliva, x-ray and ultrasound are offered in barangay health centers or stations.
6. Pediatrician is a specialist in children's health and diseases.
7. A midwife offers health services to women during pregnancy and childbirth.
8. Hospital is a facility for consultation, treatment, surgery and hospitalization needs of patients.
9. A physical therapist is a specialist in muscular disorders who gives hands-on care and prescribed exercises to persons with injuries, disabilities and other health conditions that need treatment.
10. A cardiologist is a specialist in eye conditions and diseases.



## ***Additional Activity***

Directions: Identify five community health resources and facilities that address personal health issues and concerns in **Column A** and give their importance in **Column B**. Write the answers in your notebook.

<b>Column A</b>	<b>Column B</b>
Community Health Resources and Facilities	Importance
1.	
2.	
3.	
4.	
5.	



## Answer Key

<p><b>What I Have Learned</b></p> <ol style="list-style-type: none"> <li>1. pharmacy</li> <li>2. first aid stations</li> <li>3. midwife</li> <li>4. hospital</li> <li>5. ophthalmologist</li> <li>6. cardiologist</li> <li>7. surgeon</li> <li>8. physical therapist</li> <li>9. children</li> <li>10. dermatologist</li> </ol> <p><b>Additional Activity</b></p> <p>Pupil's answer may vary</p>	<p><b>What's More</b></p> <ol style="list-style-type: none"> <li>1. A</li> <li>2. A</li> <li>3. C</li> <li>4. B</li> <li>5. C</li> </ol> <p><b>Assessment</b></p> <ol style="list-style-type: none"> <li>1. True</li> <li>2. False</li> <li>3. True</li> <li>4. True</li> <li>5. False</li> <li>6. True</li> <li>7. True</li> <li>8. True</li> <li>9. True</li> <li>10. False</li> </ol>	<p><b>What I Know</b></p> <ol style="list-style-type: none"> <li>1. D</li> <li>2. E</li> <li>3. F</li> <li>4. H</li> <li>5. A</li> <li>6. B</li> <li>7. I</li> <li>8. C</li> <li>9. J</li> <li>10. G</li> </ol> <p><b>What I Can Do</b></p> <ol style="list-style-type: none"> <li>1. health</li> <li>2. birthing center</li> <li>3. laboratory</li> <li>4. school clinic</li> <li>5. doctor</li> <li>6. physical therapist</li> <li>7. heart</li> <li>8. eye doctor</li> <li>9. hospital</li> <li>10. barangay health center</li> </ol>
--	--	--

## ***References***

- First Aid Station. Retrieved on June 29, 2020 at  
<https://www.thefreedictionary.com/first-aid+station>
- Maternal Health. Retrieved on June 29, 2020 at <http://www9.who.int/maternal-health/en>
- Maternal and Child Health/ Encyclopedia.com Retrieved on June 29, 2020 at  
<https://www.encyclopedias-alamancas-transcripts-and-maps/maternal-and-child-health>
- MELCs in Health 6, page 353 Medical Laboratory Professionals: Who's Who in the Lab/Lab Tests Online. Retrieved on June 29, 2020 at  
<https://labtestonline.org/articles/medical-laboratory-professionals>
- Medical Professionals. Retrieved on November 28, 2019 at  
[https://www.cgcom.es/noticias/2010/12/10\\_1-12\\_13\\_medical\\_professional](https://www.cgcom.es/noticias/2010/12/10_1-12_13_medical_professional)
- OSHA/ANSI First Aid Stations & Cabinets/FirstAidMArt.com. Retrieved on June 29, 2020 on <https://firstaidmart.com/first-aid-stations-cabinets.html>
- Pharmacist- What do Pharmacists do? Retrieved on June 29, 2020 at  
<https://studentscholarship.org/salary>
- Your Health Care Team During Pregnancy. Retrieved on June 29, 2020 at  
<https://www.aboutkidshealth.ca/article?contentid=393&language=english>

**For inquiries or feedback, please write or call:**

Department of Education - Bureau of Learning Resources (DepEd-BLR)

Ground Floor, Bonifacio Bldg., DepEd Complex  
Meralco Avenue, Pasig City, Philippines 1600

Telefax: (632) 8634-1072; 8634-1054; 8631-4985

Email Address: [blr.lrqad@deped.gov.ph](mailto:blr.lrqad@deped.gov.ph) \* [blr.lrpd@deped.gov.ph](mailto:blr.lrpd@deped.gov.ph)